

Starfield Building Parcels



BEST VALUE IN KESWICK

A quiet lane from a state maintained road leads you to these verdant parcels surrounded by significant estates in conservation easement. New road, survey, soil work, well, ready to build. Part of 5 lot subdivision in the heart of Keswick.

Lot 2 MLS # 444215 4.2+/- acres \$179,500

BRING YOUR OFFER!!!

Jim Bonner · The Land Office

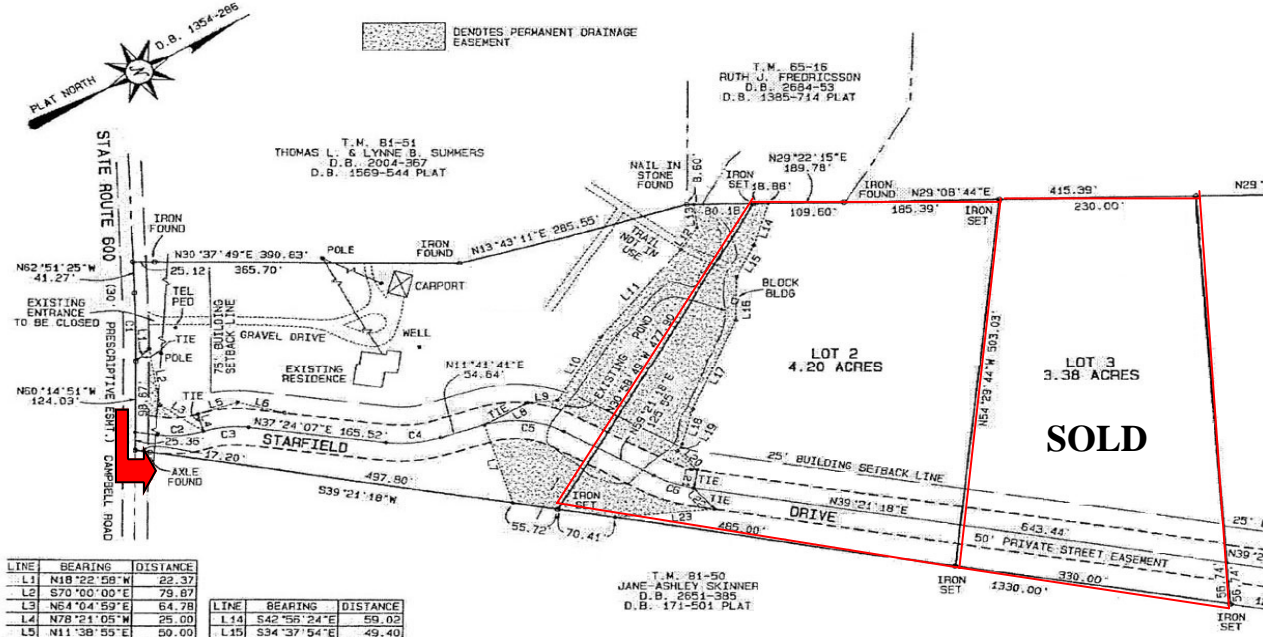
jbon@landofc.com · www.landofc.com · (434) 951-5102

Roy Wheeler Realty Co.

This information is believed accurate but not guaranteed.



Starfield Building Parcels



Directions

From Charlottesville, take Rt. 250 East to the Shadwell Store, turn left on Rt. 231 N/Rt. 22E. Proceed 5 miles to the Cismont Store, turn right on Rt. 22 East (Louisa Road); continue 1/4 mile and turn right on VSH 600 (Campbell Road); property is 1.5 miles on the left.

LINE	BEARING	DISTANCE
L1	N19°22'58"W	22.37
L2	S70°00'00"E	75.87
L3	N64°04'59"E	64.78
L4	N78°21'05"W	25.00
L5	N11°38'55"E	60.00
L6	N44°36'05"E	98.43
L7	N78°18'20"W	413.48
L8	N00°18'25"W	60.18
L9	N25°00'00"E	36.71
L10	N29°46'38"W	100.90
L11	N50°58'53"W	152.28
L12	N25°28'58"W	36.60
L13	N68°23'07"W	31.07

LINE	BEARING	DISTANCE
L14	S42°56'24"E	69.02
L15	S34°37'54"E	49.40
L16	S59°50'06"E	55.85
L17	S37°40'55"E	132.50
L18	S44°52'42"E	49.65
L19	S29°50'17"E	11.58
L20	N76°00'00"E	36.37
L21	S50°38'42"E	25.00
L22	N79°00'38"E	39.05
L23	S25°00'00"W	121.00

LINE	DELTA	RADIUS	ARC	TANGENT	CHORD	CHORD BEARING	LINE	BEARING	DISTANCE
C1	2°36'33"	2028.05	92.36	46.19	92.35	N61°33'08"W	L23	N07°40'12"W	45.00
C2	27°42'23"	120.00	58.03	29.59	57.46	N25°30'07"E	L24	N82°19'49"E	55.20
C3	25°45'12"	120.00	53.94	27.43	53.48	N24°31'31"E	L25	S38°47'07"E	10.00
C4	25°42'26"	150.00	67.30	34.23	66.74	N24°32'54"E	L26	S38°47'07"E	10.00
C5	47°59'38"	120.00	89.82	53.00	96.97	N35°31'30"E	L27	S20°05'58"W	55.20
C6	20°00'00"	150.00	52.35	26.45	52.09	N49°21'18"E	L28	N69°54'02"W	45.00

