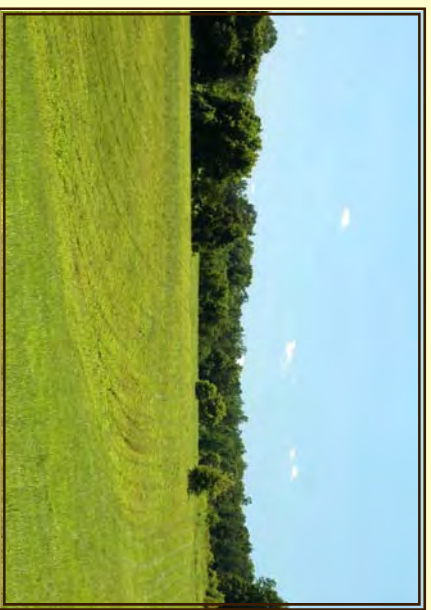


The Cottage at Lakeview

Charming two bedroom home on 40 acres with a good mix of open pasture and mature hardwood forest with your own stocked pond. This two bedroom cottage features hardwood floors and a rear deck overlooking the pond. Property adjoins and is part of a 1,200 acre estate that is protected by a Virginia Outdoor Foundation conservation easement.

MLS#471175



Jim Bonner

www.landofc.com

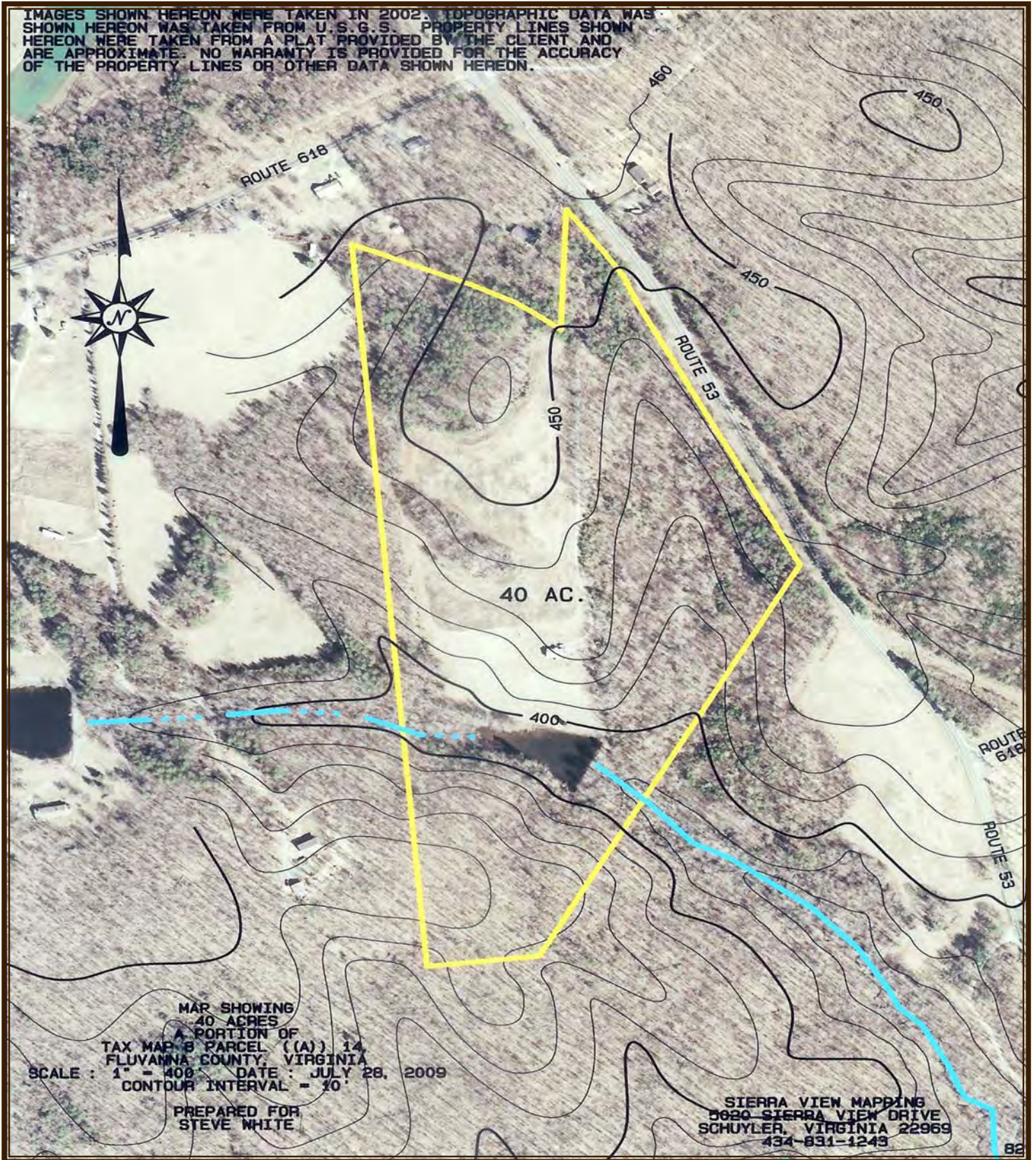
(434) 951-5102 • jbon@landofc.com

Steve White

(434) 242-8355

www.virginiafineproperties.com

IMAGES SHOWN HEREON WERE TAKEN IN 2002. TOPOGRAPHIC DATA WAS SHOWN HEREON WAS TAKEN FROM U.S.G.S. PROPERTY LINES SHOWN HEREON WERE TAKEN FROM A PLAT PROVIDED BY THE CLIENT AND ARE APPROXIMATE. NO WARRANTY IS PROVIDED FOR THE ACCURACY OF THE PROPERTY LINES OR OTHER DATA SHOWN HEREON.



MAP SHOWING
40 ACRES
A PORTION OF
TAX MAP B PARCEL ((A)) 14,
FLUVANNA COUNTY, VIRGINIA
SCALE : 1" = 400' DATE : JULY 28, 2009
CONTOUR INTERVAL = 10'
PREPARED FOR
STEVE WHITE

SIERRA VIEW MAPPING
5620 SIERRA VIEW DRIVE
SCHUYLER, VIRGINIA 22969
434-831-1243

Directions: From Charlottesville take Rte 53 south; entrance to the Cottage at Lake View is on right just before Rte 618 intersection; look for Roy Wheeler Realty Co. sign at driveway entrance.

Roy Wheeler Realty Co.

This information is deemed accurate but not guaranteed.

